

TEST REPORT

No. : SHCCM151103704

Date : Dec. 10, 2015

Page: 1 of 7

SUZHOU TECON CONSTRUCTION TECHNOLOGY CO., LTD.

ADD: 1108-1109, BLOCK A, BUILDING 2, LEFO COMMERCIAL CENTER, WUZHONG DISTRICT,
SUZHOU, JIANGSU PROVINCE, CHINA

The following sample(s) was/ were submitted and identified on behalf of the client as:

Sample Name : DOMINO SHUTTERING PANEL (ALUMINUM)
Sample Number : SHCCM151103704
Test Required : Load test
Test Standard : Offered by client
Product specification : 2500x750mm
Buyer : EHUB PTE LTD.
Manufacturer : SUZHOU TECON CONSTRUCTION TECHNOLOGY CO., LTD.
Material and Mark : ALUMINUM
Date of Receipt : Nov. 19, 2015
Test Period : Nov. 19, 2015 to Dec. 10, 2015
Test result(s) : For further details, please refer to the following page(s)
***** To be continued*****

Signed for SGS-CSTC Standards
Technical Services (Shanghai) Co., Ltd.



Tiffany Liu
Authorized signatory



This document is issued by the Company subject to its General Conditions of Service printed overleaf, available on request or accessible at <http://www.sgs.com/en/Terms-and-Conditions.aspx> and, for electronic format documents, subject to Terms and Conditions for Electronic Documents at <http://www.sgs.com/en/Terms-and-Conditions/Terms-e-Document.aspx>. Attention is drawn to the limitation of liability, indemnification and jurisdiction issues defined therein. Any holder of this document is advised that information contained hereon reflects the Company's findings at the time of its intervention only and within the limits of Client's instructions, if any. The Company's sole responsibility is to its Client and this document does not exonerate parties to a transaction from exercising all their rights and obligations under the transaction documents. This document cannot be reproduced except in full, without prior written approval of the Company. Any unauthorized alteration, forgery or falsification of the content or appearance of this document is unlawful and offenders may be prosecuted to the fullest extent of the law. Unless otherwise stated the results shown in this test report refer only to the sample(s) tested and such sample(s) are retained for 30 days only.

Attention: To check the authenticity of testing /inspection report & certificate, please contact us at telephone: (86-755) 8307 1443, or email: CN.Deccheck@sgs.com

No.89, Block 1159, East Kang Qiao Road, Pudong District, Shanghai, China. 201319 t(86-21) 61196300 f(86-21) 61191853/68183920 www.sgsgroup.com.cn
中国·上海·浦东康桥东路1159弄69号 邮编: 201319 t(86-21) 61196300 f(86-21) 61191853/68183920 e sgs.china@sgs.com

TEST REPORT

No. : SHCCM151103704

Date : Dec. 10, 2015

Page: 2 of 7

Sample dimension : 2500mm×751mm×118mm (length × width × height)

Test method (offered by client):

1. Place the sample on the support scaffold. Test arrangement is shown in the test schematic diagram. The size of load plate is 400mm x 740mm. The total weight of load plates and beams is 6.3kN.
2. Take an initial deflection measurement when the weight of load plates and beams reaches 4kN.
3. Apply the test load at a rate of 20kN/min to the sample. Record the deflections in the increment of 10kN until the test total load reaches 124kN.
4. Check whether the sample is broken when the test total load reaches 170kN.
5. Continue the load test until the sample breaks. Record the test load. Calculate the maximum load.

Test Results:

Test item	Test result
Deflection measurement	See Annex A for detail
Load=170kN	The sample was unbroken
Maximum load	236.8kN

Note: The load includes the weight of load plate and beams.

***** To be continued*****



This document is issued by the Company subject to its General Conditions of Service printed overleaf, available on request or accessible at <http://www.sgs.com/en/Terms-and-Conditions.aspx> and, for electronic format documents, subject to Terms and Conditions for Electronic Documents at <http://www.sgs.com/en/Terms-and-Conditions/Terms-e-Document.aspx>. Attention is drawn to the limitation of liability, indemnification and jurisdiction issues defined therein. Any holder of this document is advised that information contained hereon reflects the Company's findings at the time of its intervention only and within the limits of Client's instructions, if any. The Company's sole responsibility is to its Client and this document does not exonerate parties to a transaction from exercising all their rights and obligations under the transaction documents. This document cannot be reproduced except in full, without prior written approval of the Company. Any unauthorized alteration, forgery or falsification of the content or appearance of this document is unlawful and offenders may be prosecuted to the fullest extent of the law. Unless otherwise stated the results shown in this test report refer only to the sample(s) tested and such sample(s) are retained for 30 days only.

Attention: To check the authenticity of testing /inspection report & certificate, please contact us at telephone: (86-755) 8307 1443, or email: CN.Deccheck@sgs.com

No.69, Block 1159, East Kang Qiao Road, Pudong District, Shanghai, China. 201319 t(86-21) 61196300 f(86-21) 61191853/68183920 www.sgsgroup.com.cn
 中国·上海·浦东康桥东路1159弄69号 邮编: 201319 t(86-21) 61196300 f(86-21) 61191853/68183920 e sgs.china@sgs.com

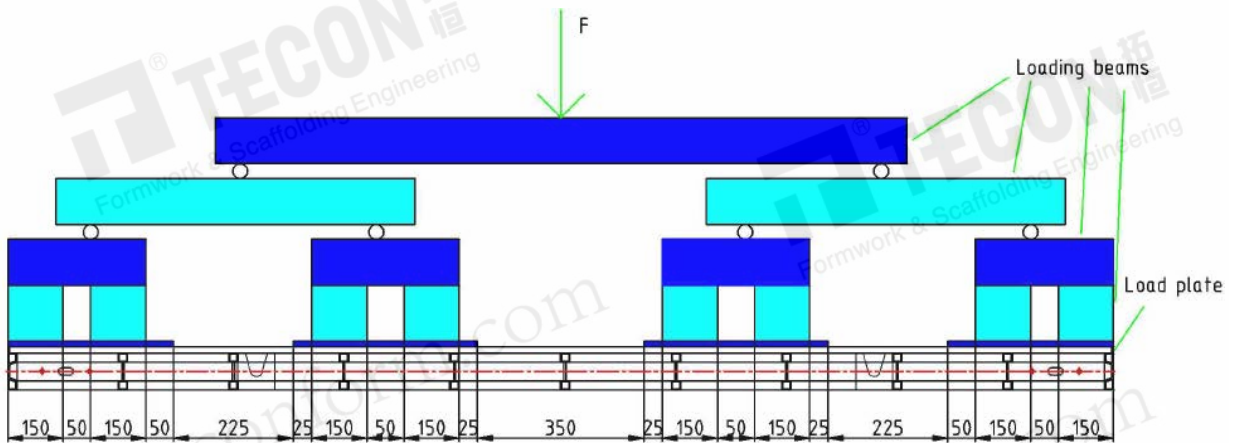
TEST REPORT

No. : SHCCM151103704

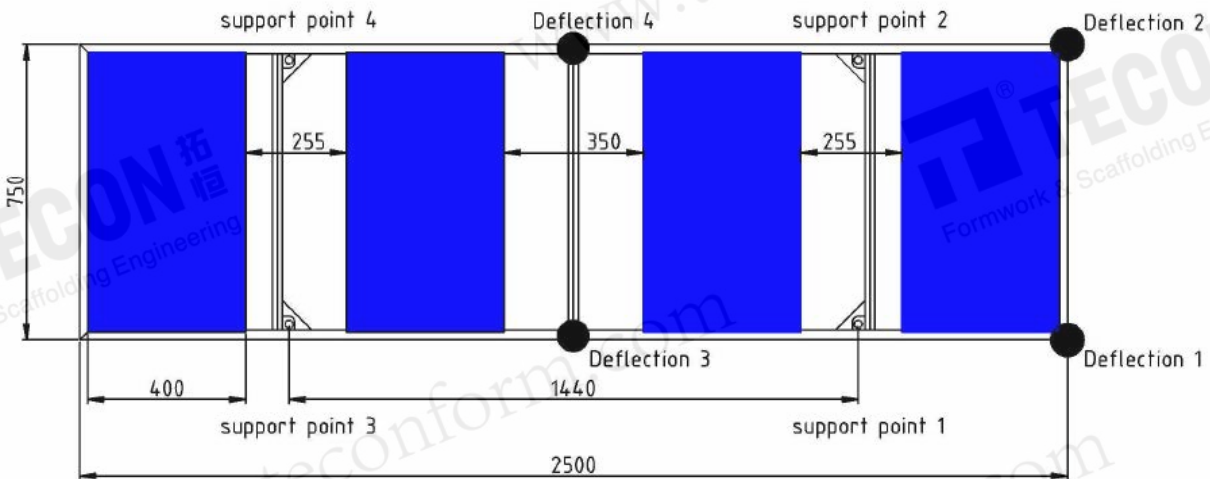
Date : Dec. 10, 2015

Page: 3 of 7

Test schematic diagram (in mm):



The positions of the deflections and supports (in mm):



***** To be continued*****



This document is issued by the Company subject to its General Conditions of Service printed overleaf, available on request or accessible at <http://www.sgs.com/en/Terms-and-Conditions.aspx> and, for electronic format documents, subject to Terms and Conditions for Electronic Documents at <http://www.sgs.com/en/Terms-and-Conditions/Terms-e-Document.aspx>. Attention is drawn to the limitation of liability, indemnification and jurisdiction issues defined therein. Any holder of this document is advised that information contained hereon reflects the Company's findings at the time of its intervention only and within the limits of Client's instructions, if any. The Company's sole responsibility is to its Client and this document does not exonerate parties to a transaction from exercising all their rights and obligations under the transaction documents. This document cannot be reproduced except in full, without prior written approval of the Company. Any unauthorized alteration, forgery or falsification of the content or appearance of this document is unlawful and offenders may be prosecuted to the fullest extent of the law. Unless otherwise stated the results shown in this test report refer only to the sample(s) tested and such sample(s) are retained for 30 days only.

Attention: To check the authenticity of testing /inspection report & certificate, please contact us at telephone: (86-755) 8307 1443, or email: CN.Deccheck@sgs.com

No.69, Block 1159, East Kang Qiao Road, Pudong District, Shanghai, China. 201319 t(86-21) 61196300 f(86-21) 61191853/68183920 www.sgsgroup.com.cn
 中国·上海·浦东康桥东路1159弄69号 邮编: 201319 t(86-21) 61196300 f(86-21) 61191853/68183920 e sgs.china@sgs.com

TEST REPORT

No. : SHCCM151103704

Date : Dec. 10, 2015

Page: 4 of 7

Annex A Test data

No.	Testing Load (kN)	Deflection 1 (mm)	Deflection 2 (mm)	Deflection 3 (mm)	Deflection 4 (mm)
1	0	0.00	0.00	0.00	0.00
2	4	0.48	0.42	0.02	0.04
3	14	0.93	0.84	0.03	0.08
4	24	1.87	2.02	0.06	0.21
5	34	2.73	3.13	0.11	0.25
6	44	3.54	4.12	0.14	0.25
7	54	4.36	5.03	0.17	0.25
8	64	5.10	5.82	0.20	0.25
9	74	5.89	6.62	0.24	0.26
10	84	6.60	7.34	0.28	0.32
11	94	7.30	8.03	0.33	0.38
12	104	7.98	8.72	0.39	0.44
13	114	8.66	9.40	0.46	0.52
14	124	9.36	10.10	0.55	0.60

***** To be continued*****



This document is issued by the Company subject to its General Conditions of Service printed overleaf, available on request or accessible at <http://www.sgs.com/en/Terms-and-Conditions.aspx> and, for electronic format documents, subject to Terms and Conditions for Electronic Documents at <http://www.sgs.com/en/Terms-and-Conditions/Terms-e-Document.aspx>. Attention is drawn to the limitation of liability, indemnification and jurisdiction issues defined therein. Any holder of this document is advised that information contained hereon reflects the Company's findings at the time of its intervention only and within the limits of Client's instructions, if any. The Company's sole responsibility is to its Client and this document does not exonerate parties to a transaction from exercising all their rights and obligations under the transaction documents. This document cannot be reproduced except in full, without prior written approval of the Company. Any unauthorized alteration, forgery or falsification of the content or appearance of this document is unlawful and offenders may be prosecuted to the fullest extent of the law. Unless otherwise stated the results shown in this test report refer only to the sample(s) tested and such sample(s) are retained for 30 days only.

Attention: To check the authenticity of testing /inspection report & certificate, please contact us at telephone: (86-755) 8307 1443, or email: CN.Deccheck@sgs.com

No.69, Block 1159, East Kang Qiao Road, Pudong District, Shanghai, China. 201319 t(86-21) 61196300 f(86-21) 61191853/68183920 www.sgsgroup.com.cn
中国·上海·浦东康桥东路1159弄69号 邮编: 201319 t(86-21) 61196300 f(86-21) 61191853/68183920 e sgs.china@sgs.com

TEST REPORT

No. : SHCCM151103704

Date : Dec. 10, 2015

Page: 5 of 7

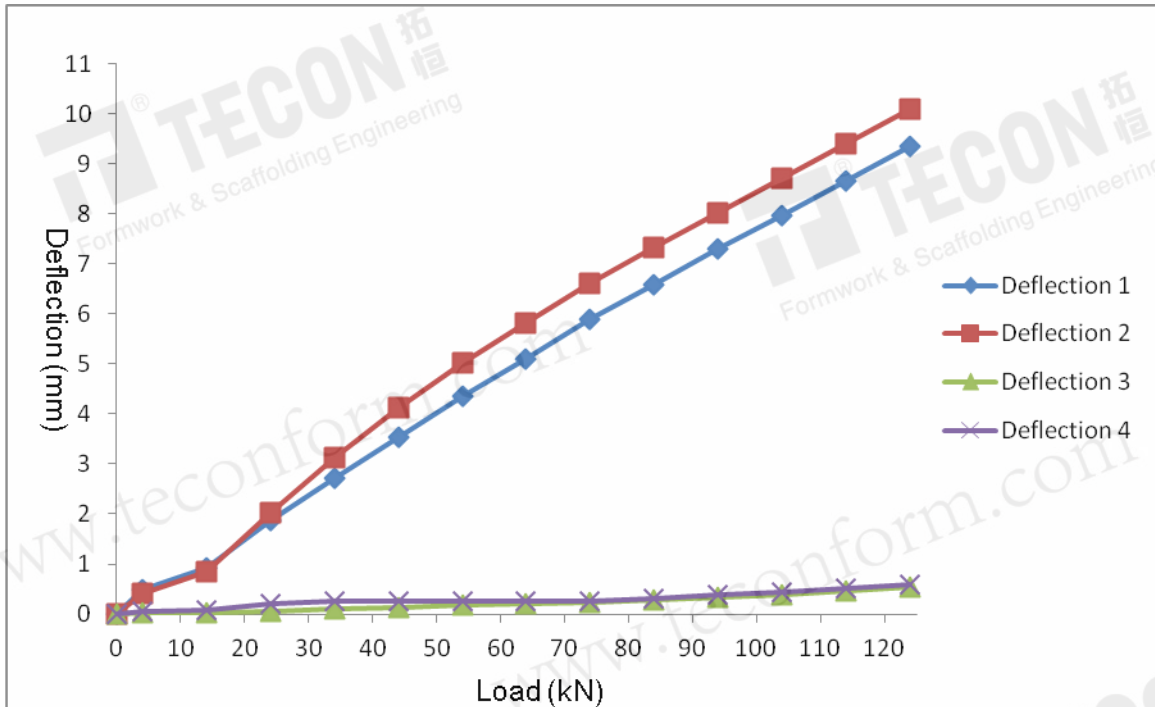


Fig.1 Test curve

Statement: Unless otherwise stated the results shown in this test report refer only to the sample(s) tested.

***** To be continued*****



This document is issued by the Company subject to its General Conditions of Service printed overleaf, available on request or accessible at <http://www.sgs.com/en/Terms-and-Conditions.aspx> and, for electronic format documents, subject to Terms and Conditions for Electronic Documents at <http://www.sgs.com/en/Terms-and-Conditions/Terms-e-Document.aspx>. Attention is drawn to the limitation of liability, indemnification and jurisdiction issues defined therein. Any holder of this document is advised that information contained hereon reflects the Company's findings at the time of its intervention only and within the limits of Client's instructions, if any. The Company's sole responsibility is to its Client and this document does not exonerate parties to a transaction from exercising all their rights and obligations under the transaction documents. This document cannot be reproduced except in full, without prior written approval of the Company. Any unauthorized alteration, forgery or falsification of the content or appearance of this document is unlawful and offenders may be prosecuted to the fullest extent of the law. Unless otherwise stated the results shown in this test report refer only to the sample(s) tested and such sample(s) are retained for 30 days only.

Attention: To check the authenticity of testing /inspection report & certificate, please contact us at telephone: (86-755) 8307 1443, or email: CN.Deccheck@sgs.com

SGS-CC
Testing Center

No.69, Block 1159, East Kang Qiao Road, Pudong District, Shanghai, China. 201319 t(86-21) 61196300 f(86-21) 61191853/68183920 www.sgsgroup.com.cn
中国·上海·浦东康桥东路1159弄69号 邮编: 201319 t(86-21) 61196300 f(86-21) 61191853/68183920 e sgs.china@sgs.com

TEST REPORT

No. : SHCCM151103704

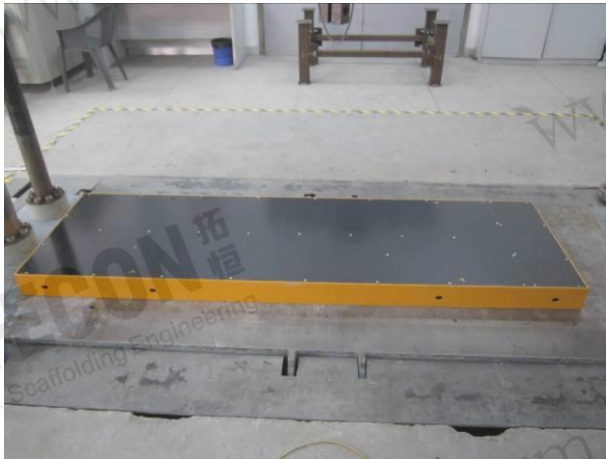
Date : Dec. 10, 2015

Page: 6 of 7

Test Photos:



Support scaffold



Front view of sample



Back view of sample

***** To be continued *****



This document is issued by the Company subject to its General Conditions of Service printed overleaf, available on request or accessible at <http://www.sgs.com/en/Terms-and-Conditions.aspx> and, for electronic format documents, subject to Terms and Conditions for Electronic Documents at <http://www.sgs.com/en/Terms-and-Conditions/Terms-e-Document.aspx>. Attention is drawn to the limitation of liability, indemnification and jurisdiction issues defined therein. Any holder of this document is advised that information contained hereon reflects the Company's findings at the time of its intervention only and within the limits of Client's instructions, if any. The Company's sole responsibility is to its Client and this document does not exonerate parties to a transaction from exercising all their rights and obligations under the transaction documents. This document cannot be reproduced except in full, without prior written approval of the Company. Any unauthorized alteration, forgery or falsification of the content or appearance of this document is unlawful and offenders may be prosecuted to the fullest extent of the law. Unless otherwise stated the results shown in this test report refer only to the sample(s) tested and such sample(s) are retained for 30 days only.

Attention: To check the authenticity of testing /inspection report & certificate, please contact us at telephone: (86-755) 8307 1443, or email: CN.Doccheck@sgs.com

No.69, Block 1159, East Kang Qiao Road, Pudong District, Shanghai, China. 201319 t(86-21) 61196300 f(86-21) 61191853/68183920 www.sgsgroup.com.cn
中国·上海·浦东康桥东路1159弄69号 邮编: 201319 t(86-21) 61196300 f(86-21) 61191853/68183920 e sgs.china@sgs.com

TEST REPORT

No. : SHCCM151103704

Date : Dec. 10, 2015

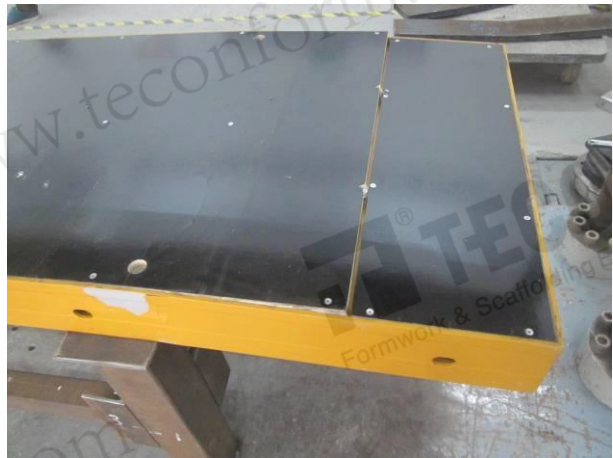
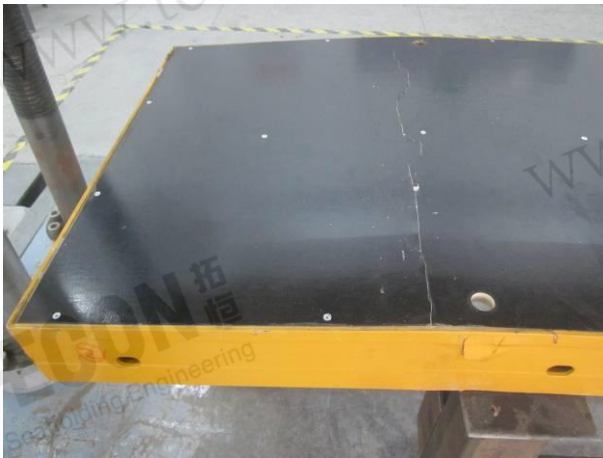
Page: 7 of 7



In test



In test (170kN)



After maximum load test

***** End of report *****



This document is issued by the Company subject to its General Conditions of Service printed overleaf, available on request or accessible at <http://www.sgs.com/en/Terms-and-Conditions.aspx> and, for electronic format documents, subject to Terms and Conditions for Electronic Documents at <http://www.sgs.com/en/Terms-and-Conditions/Terms-e-Document.aspx>. Attention is drawn to the limitation of liability, indemnification and jurisdiction issues defined therein. Any holder of this document is advised that information contained hereon reflects the Company's findings at the time of its intervention only and within the limits of Client's instructions, if any. The Company's sole responsibility is to its Client and this document does not exonerate parties to a transaction from exercising all their rights and obligations under the transaction documents. This document cannot be reproduced except in full, without prior written approval of the Company. Any unauthorized alteration, forgery or falsification of the content or appearance of this document is unlawful and offenders may be prosecuted to the fullest extent of the law. Unless otherwise stated the results shown in this test report refer only to the sample(s) tested and such sample(s) are retained for 30 days only.

Attention: To check the authenticity of testing /inspection report & certificate, please contact us at telephone: (86-755) 8307 1443, or email: CN.Deccheck@sgs.com

No.69, Block 1159, East Kang Qiao Road, Pudong District, Shanghai, China. 201319 t(86-21) 61196300 f(86-21) 61191853/68183920 www.sgsgroup.com.cn
中国·上海·浦东康桥东路1159弄69号 邮编: 201319 t(86-21) 61196300 f(86-21) 61191853/68183920 e sgs.china@sgs.com